



MQ

MONTGOMERY
QUARTER

**9260 MONTGOMERY RD.
CINCINNATI, OH 45242**

[CLICK TO VIEW
VIRTUAL TOUR](#)



PHASE I DEVELOPMENT FEATURES

RETAIL + RESTAURANT SPACE
30,000 SF TOTAL



OFFICE:
118,820 SF



RETAIL &
RESTAURANT:
30,000 SF



APARTMENTS:
148 UNITS



PARKING
GARAGE:
658 SPACES



HOTEL:
120 ROOMS



ODOT
ROUNDBOUT

THE OFFICES @ MONTGOMERY QUARTER

PHASE I

+ MQ1: 30,000 SF

- Second Floor: Leased
- \$21.50 NNN Asking + \$10.50 O.E. (EST)

+ MQ2: 54,900 SF

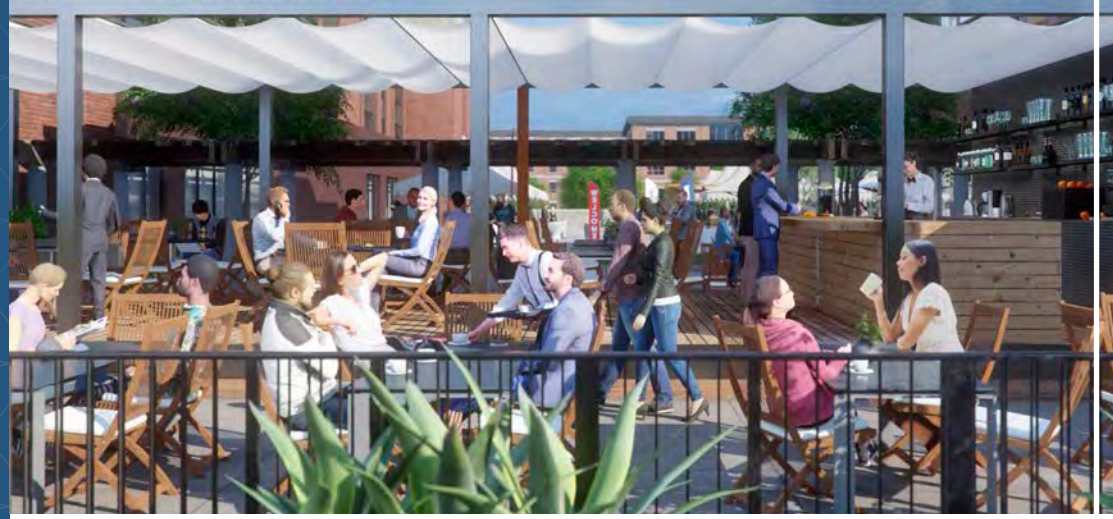
- First Floor Available: 7,684 SF
- Second Floor: Leased
- Third Floor: Leased
- \$24.50 NNN Asking + \$10.50 O.E. (EST)

+ MQ3: 50,000 SF

- Floorplates: 15,900 SF

+ 4:1,000 Parking Ratio

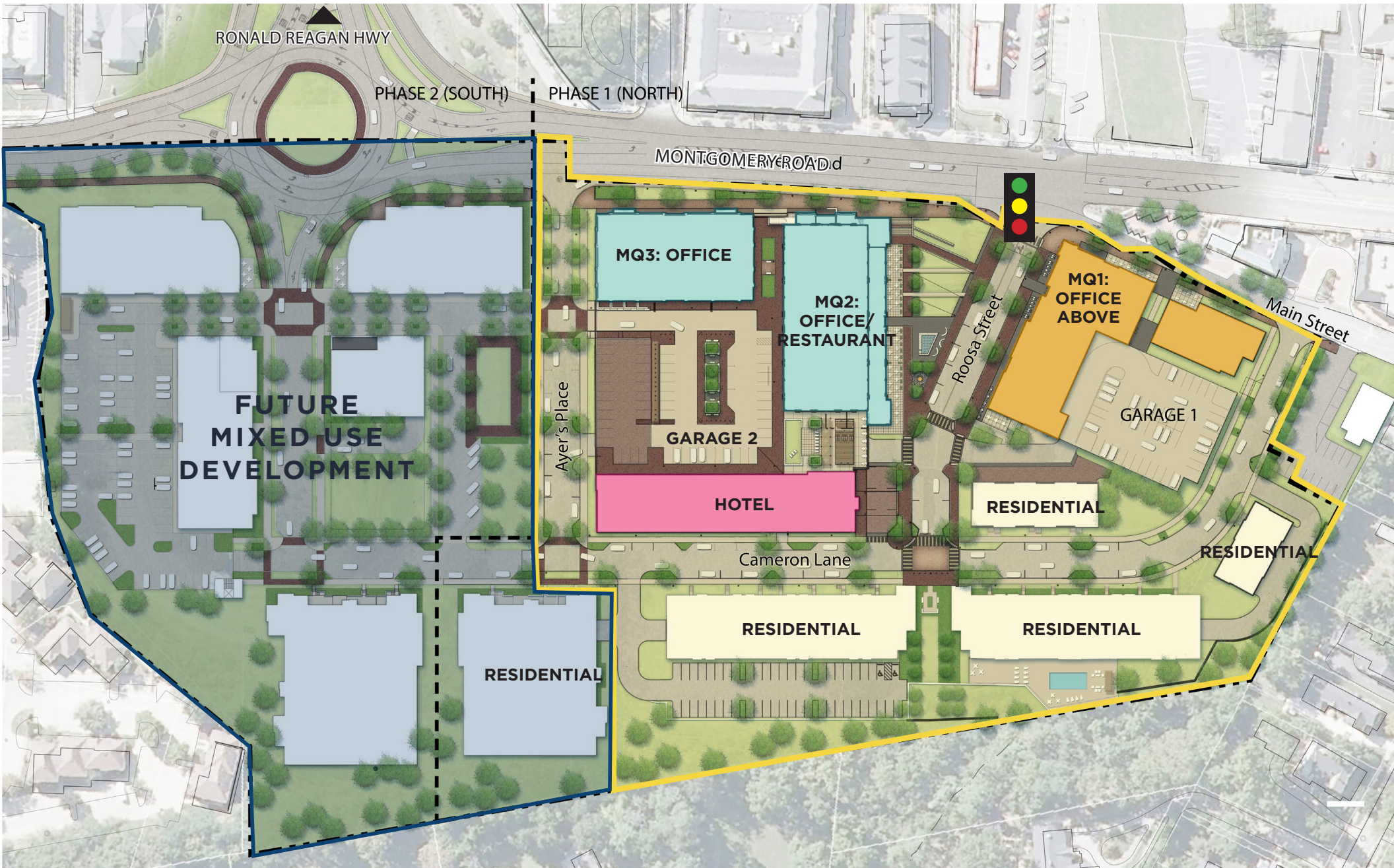
+ Free Onsite Parking



SITE PLAN

 **PHASE I**
(NORTH)
COMPLETED 2022

 **PHASE II**
(SOUTH)



FLOOR PLAN | MQ2 LEVEL 1



VIEW FROM SUITE

OFFICE GARAGE ACCESS



**VISITOR / DECK
ENTRANCE**

MQ2

MQ1

**GARAGE
ENTRANCE**

MONTGOMERY ROAD



MQ1

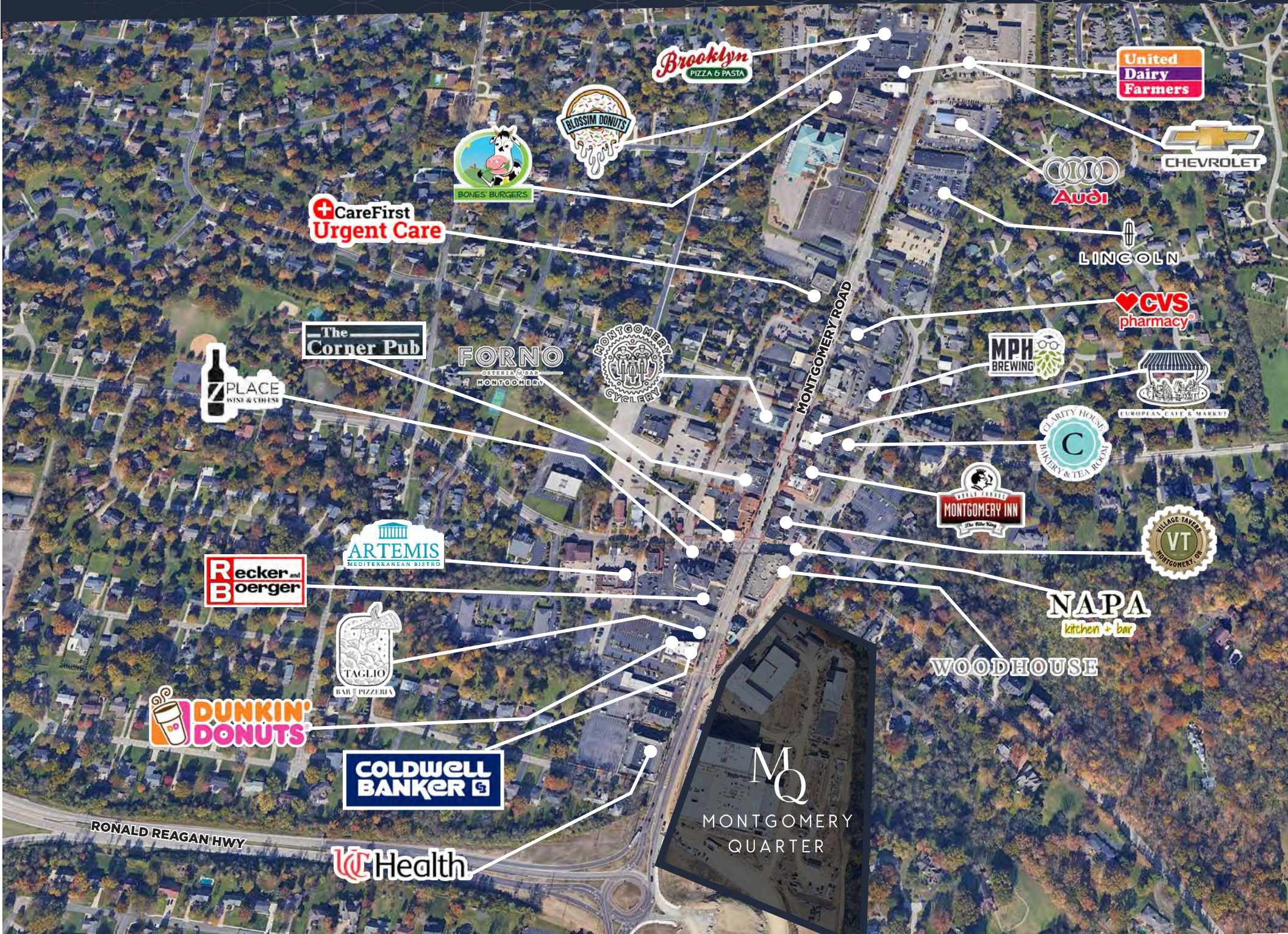


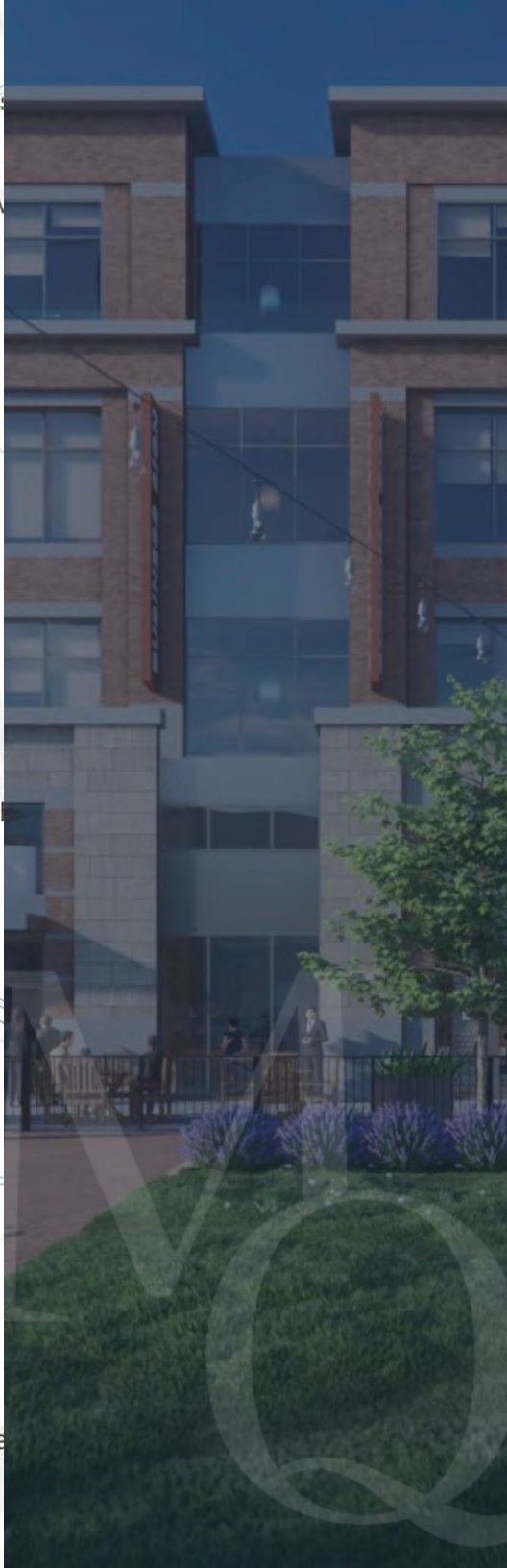
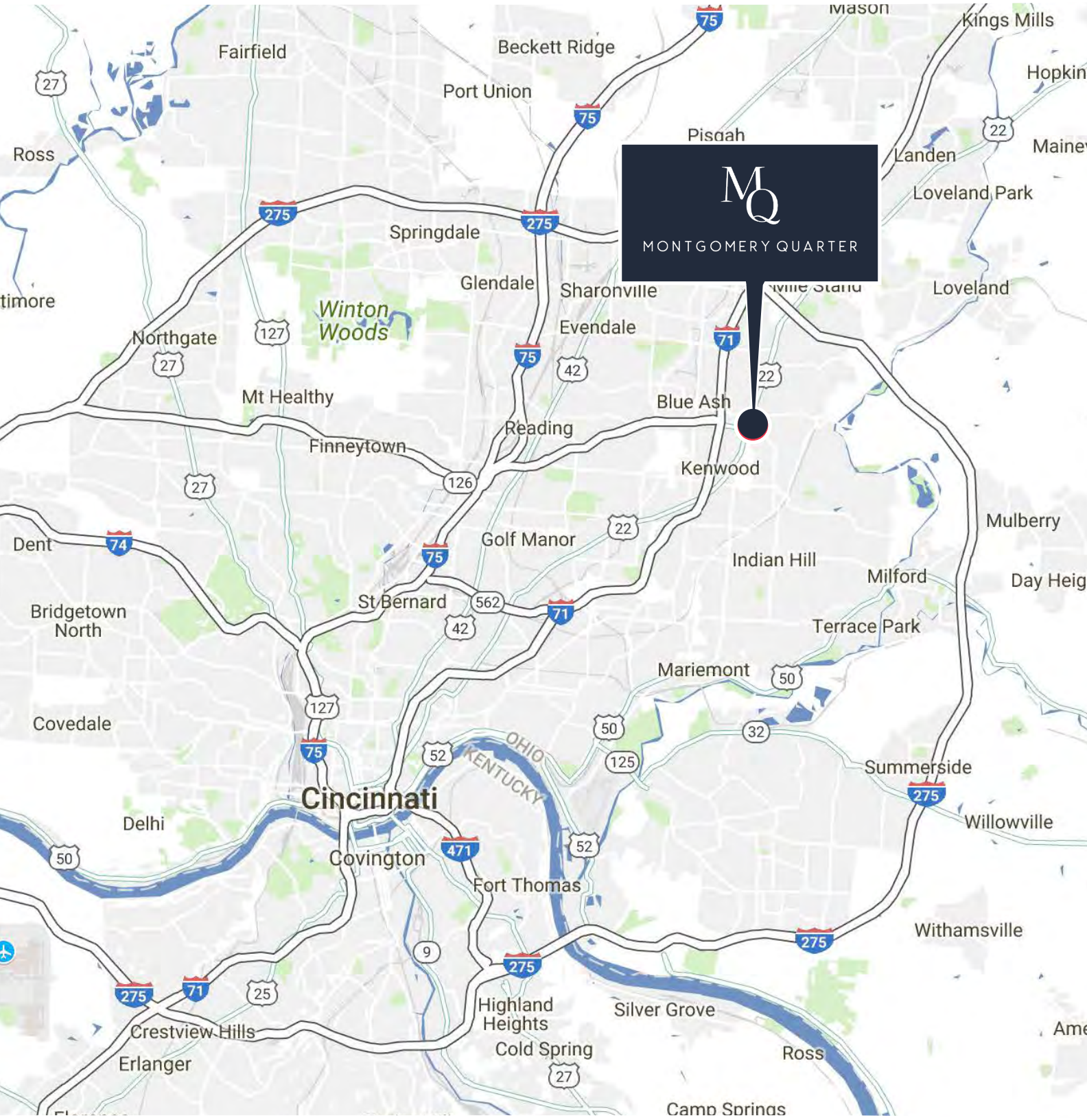
LUXURY APARTMENTS



MQ2

RETAIL AMENITIES







FOR LEASE



MONTGOMERY QUARTER

RETAIL

KATE BRANDY

+1 513 827 2471

kbrandy@brandicorp.com

OFFICE

TRAVIS LIKES

+1 513 369 1364

travis.likes@cbre.com

SCOTT YARDS, CCIM

+1 513 369 1313

scott.yards@cbre.com

HANNAH STAUBACH

+1 513 369 1346

hannah.staubach@cbre.com



© 2022 CBRE, Inc. All rights reserved. This information has been obtained from sources believed reliable, but has not been verified for accuracy or completeness. You should conduct a careful, independent investigation of the property and verify all information. Any reliance on this information is solely at your own risk. CBRE and the CBRE logo are service marks of CBRE, Inc. All other marks displayed on this document are the property of their respective owners, and the use of such logos does not imply any affiliation with or endorsement of CBRE. Photos herein are the property of their respective owners. Use of these images without the express written consent of the owner is prohibited. PMStudio_February2020